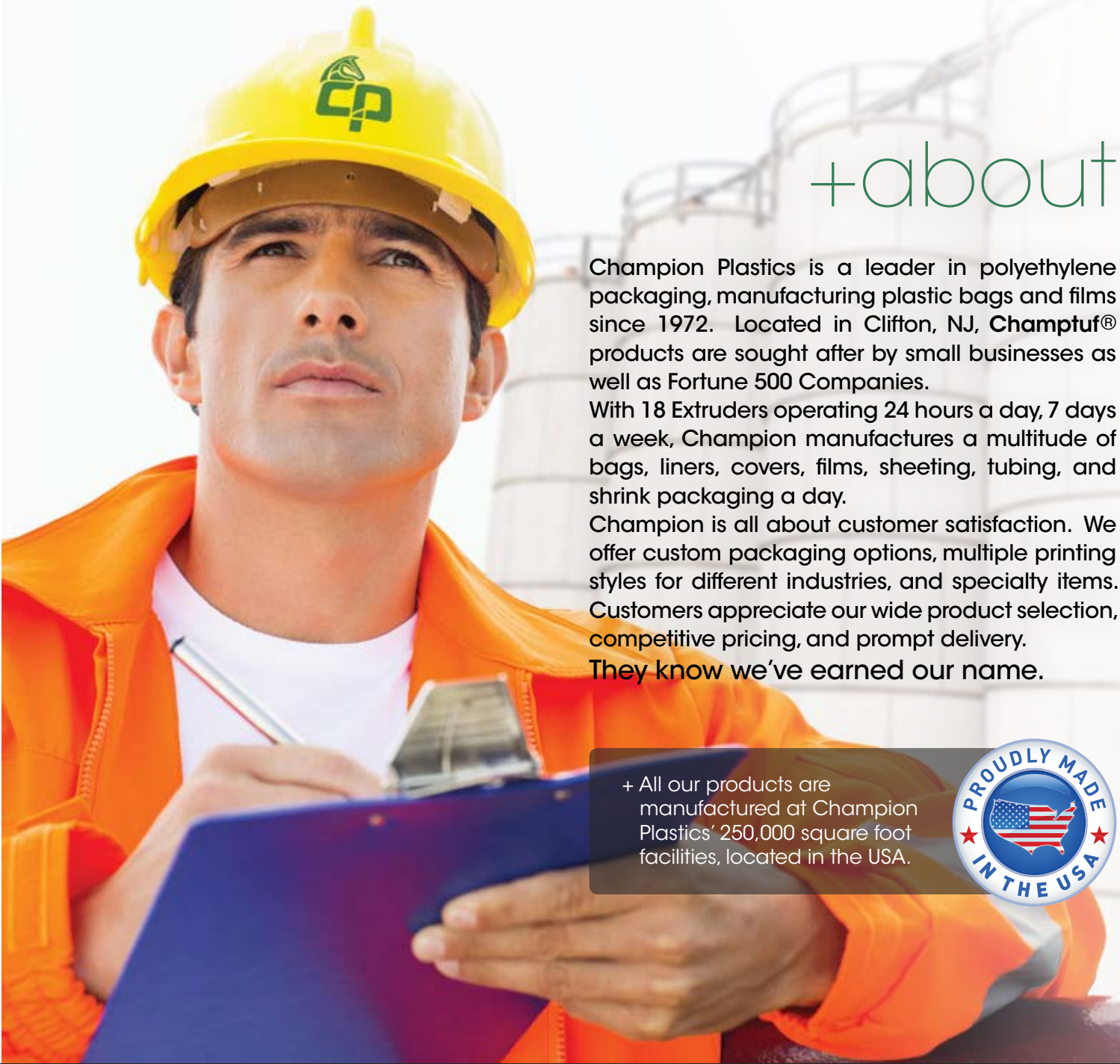




**CHAMPION PLASTICS**  
MANUFACTURER OF POLYETHYLENE BAGS AND FILMS



## +about

Champion Plastics is a leader in polyethylene packaging, manufacturing plastic bags and films since 1972. Located in Clifton, NJ, **Champtuf®** products are sought after by small businesses as well as Fortune 500 Companies.

With 18 Extruders operating 24 hours a day, 7 days a week, Champion manufactures a multitude of bags, liners, covers, films, sheeting, tubing, and shrink packaging a day.

Champion is all about customer satisfaction. We offer custom packaging options, multiple printing styles for different industries, and specialty items. Customers appreciate our wide product selection, competitive pricing, and prompt delivery.

They know we've earned our name.

+ All our products are manufactured at Champion Plastics' 250,000 square foot facilities, located in the USA.





Champion's bags come in every size, gauge and color for any need. Our extensive range of products made with our **Champtuf**® films is used industry wide by *food, pharmaceutical, chemical, industrial, waste removal, merchandise, textile, service...*





# food packaging



Our food packaging products are suitable for bakery, produce, dairy, fresh and frozen foods, as well as other applications. Our **Champtuf®** bags meet FDA regulations, are EU compliant, and certified Kosher.

recycling

Champion Plastics produces carton liners, drum liners, and pallet covers for a variety of industries including *commercial, industrial and janitorial applications.*



pallet covers



liners





# industrial waste bags



All of our Champtuf® bags are designed and proven to maintain their integrity in the handling, hauling, and disposal of hazardous waste material under the toughest conditions. All of our bags and liners meet Federal, State and Local Regulations. Customized printing is available to meet your company specifications and regulatory requirements.



Champion offers custom sheeting,  
films, and tubing to meet any of  
your polyethylene needs.



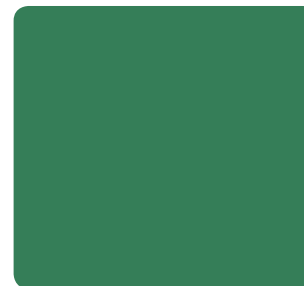
films



sheeting



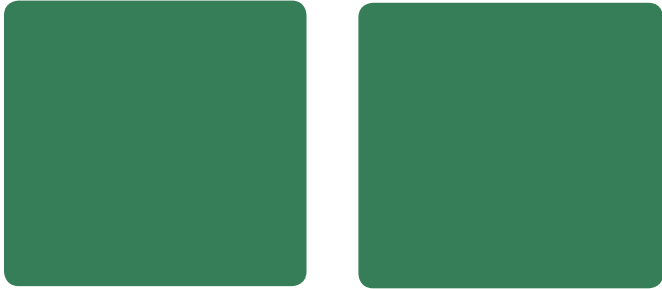
tubing





# specialty items

**Champtuf®** products include custom specialty items for *retail and merchandising* applications. Our design team helps customers choose from a myriad of options to create customized bags, liners, and films that are tailored to your needs. All of our bags are available in an array of colors and we have the capability to print up to ten colors utilizing both screen and process printing.





# +product specifications



**size**  
2" to 200" widths



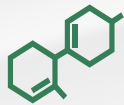
**sheets, perforated on rolls/separated**  
centerfold, singlewound & doublewound



**gauges**  
0005 to .010



**sheeting on rolls**  
construction grade, custom sizes available



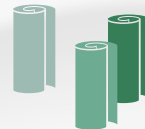
**materials**  
FDA, low density, linear low density, metallocene, high density, reprocessed, special blends and formulas available



**vent holes**  
full vents & butterfly vents



**additives**  
EVA, UVI, Anti-Stat, Flame Retardant



**colors**  
haze, tint & opaque



**bags perforated on rolls**  
tubular, gusseted, center folded, M-fold, J-fold



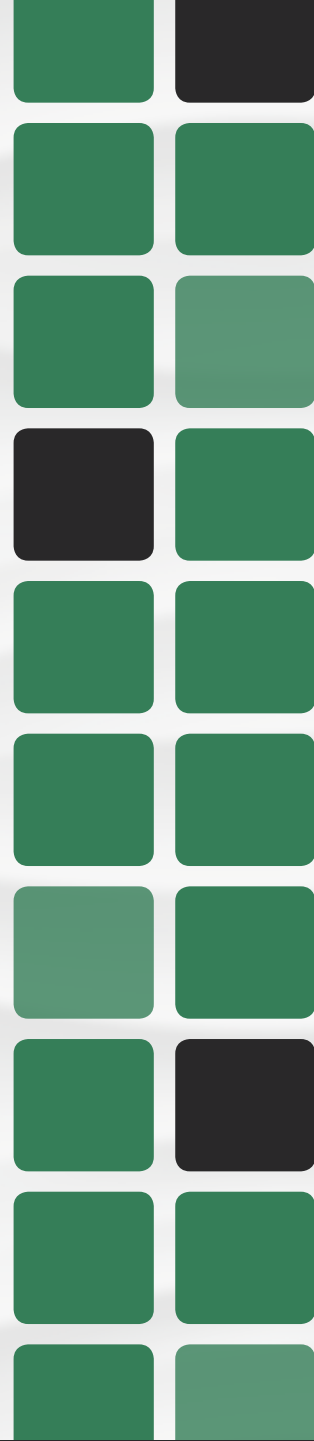
**printing**  
random repeat, registered, process, screen, flexographic, up to 10 colors



**bags, separated**  
tubular, gusseted & sideweld



**packaging**  
individual cartons, customized labels, stretch wrapped & palletized



# +some product applications



## **foods**

Bakery, beverage, dairy, meat, poultry, seafood, produce, frozen food, ice...

## **pharmaceutical**

cosmetics, medications, vitamins...

## **chemicals**

soaps, detergents, paints, solvents, liquids, powders organic & inorganic...

## **industrial**

airline, apparel, automobile, construction, electrical, foam, furniture, lumber, masonry, packaging, paper, plastic, plumbing, rubber, textile, transportation...

## **waste removal bags**

asbestos, chemical, medical, nuclear, radioactive...

## **merchandise**

promotional, retail, wholesale...

## **service**

hotel/motel, restaurant, institutions  
municipal government, city & state...





Going green since 1972



---

Champion's manufacturing plant is a state of the art facility located on 18 acres. Our storage silos have a holding capacity of more than 2,000 tons of resin, and our 18 extruders run 24/7. ISO Certified oversight ensures that the **Champtuf®** bags and films we produce are of the highest quality possible. Our experienced sales staff works hand in hand with customers on a personal level to guarantee continuous satisfaction.

## Quality... Service... Value...

With **Champtuf®** these are more than just words.



P 1.800.526.1230 F 1.800.526.1238 E [sales@championplastics.com](mailto:sales@championplastics.com)

**FDA**  
APPROVED

